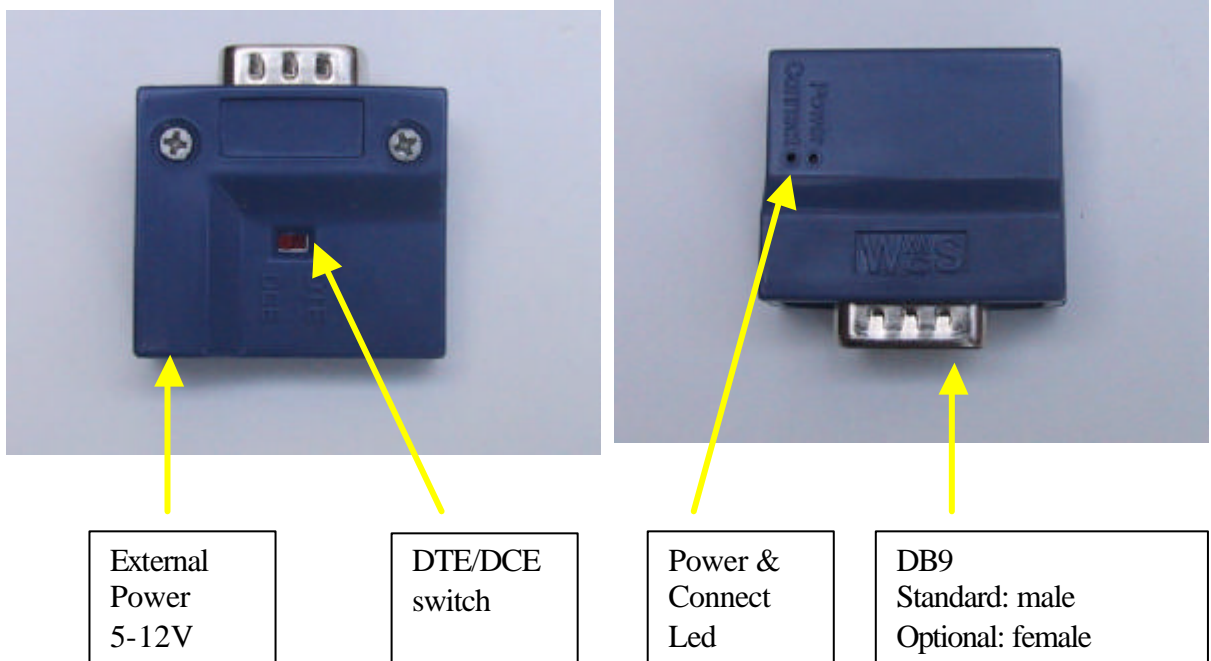


# WMCS<sup>®</sup> BT-110<sup>®</sup> Module

## 1. General Information

The WMCS<sup>®</sup> BT-110<sup>®</sup> can be used as a general wireless serial port extender as well as a simple to use blue tooth connection to either the GSP (4800 bps) and/or GSM Port (57600 bps) of the M110 module.

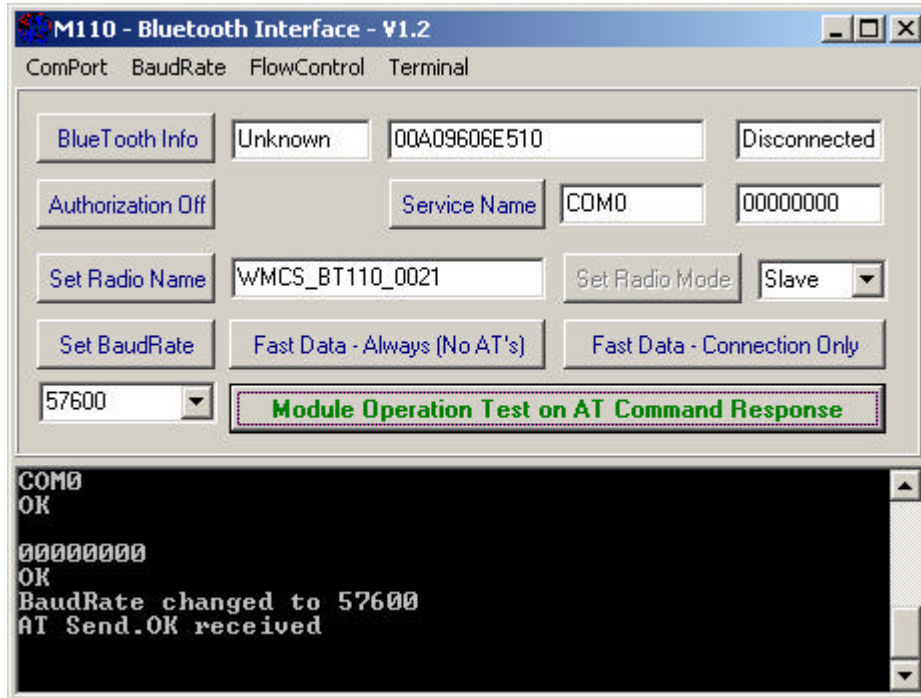


### Basic Link Configurations:

- Standard: connect the BT-110<sup>®</sup> to GMS Port or GPS Port. Before usage, prepare the BT-110<sup>®</sup> as described in the next section to meet your requirements. Switch is set to DCE.
- Guest Host System: connect the BT-110<sup>®</sup> to the host system, using either a null-modem cable (switch must be set to DCE) or a strait cable with female/female gender (switch must be set to DTE). Use the Bluetooth Interface for adjusting any setting.
- Serial Port extender: the BT-110<sup>®</sup> should be equipped with a female DB9 connector (optional, request at order) and switch must be set to DTE.

## 2. Bluetooth User Interface

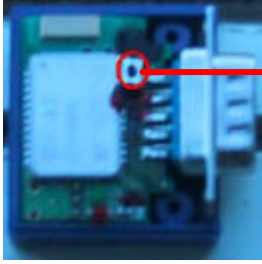
A user tool has been designed to enable easy modification of the BT-110 module for operation with the M110.



Functions:

- Test Command: Sends an AT command to the Bluetooth BT-110<sup>®</sup> and should give a return response of OK.
- Blue Tooth Info: lists the BT-110<sup>®</sup> internal settings. Some can be modified by the user and stored into the BT-110<sup>®</sup>
- Set BaudRate changes the baud rate of the RS232 connection.
- Fast Data:
  - Always: in this mode the BT-110<sup>®</sup> will not respond anymore to AT commands. The advantage is that no AT-command interpreter is in operation during Idle and Connect mode, therefore making connections faster and more reliable. **Recommended Setting.**
  - Connection Only: now the BT-110<sup>®</sup> will not respond to AT-commands in the Connect mode only. So, when in Idle mode, the BT-110<sup>®</sup> can be accessed with AT commands as normal. Although this setting will establish a connection, in some cases the connection can be delayed, especially when a lot of text items are outputted on the port. The BT-110<sup>®</sup> requires that at least during 500ms no data is outputted on the GPS or GMS Port.
  - To enable AT-command mode again after applying the Fat Data Mode Always, use the harware reset button inside the case that will restore the original factory settings. See figure 1.

### 3. Restore Factory Settings



Reset to default factory settings:  
9600 bps, RTS/CTS on